



Harrison
SALES & LETTINGS



28C Whitefield Road, New Milton, BH25 6DF
£745 Per Calendar Month

EMAIL ENQUIRIES PLEASE. HARRISON ESTATE AGENTS Are pleased to Offer a Ground Floor Studio Apartment in New Milton. Located just off the High Street with its own Private Front Door. The accommodation comprises New Kitchen and Shower Room, Decoration and Floor Coverings. The property Benefits from UPVC Double Glazing and Electric Heating. One Allocated Parking Space. Available to View Now.

FRONT



The studio is accessed down the side of the property. Upvc double glazed door to the kitchen.

KITCHEN 9'5" x 8'11" (2.88m x 2.72m)



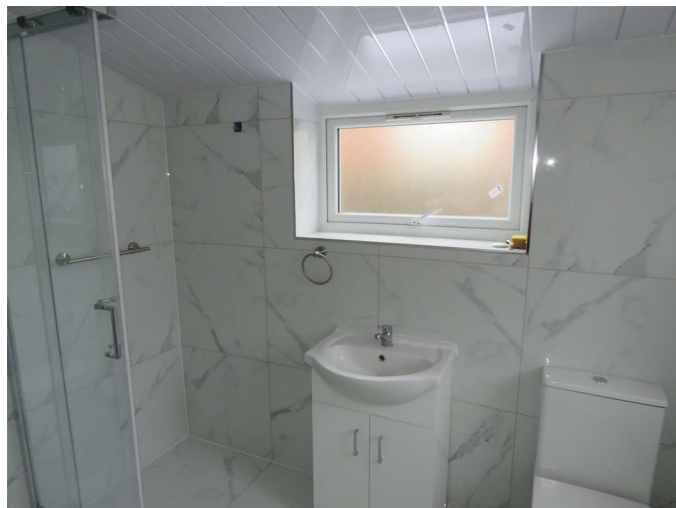
Plain plastered ceiling with light, Modern matching base and wall units, free standing cooker, fridge freezer and washing machine. Single bowl sink with draining board. Electric heater and power points.

LIVING / BEDROOM AREA 14'10" x 10'5" (4.54m x 3.19m)



Plain plastered ceiling with light. Upvc double glazed bay window to the side elevation. Electric heater, power points and laminate wood flooring.

SHOWER ROOM 8'10" x 5'3" (2.71m x 1.62m)



Panelled ceiling with light, wall mounted extractor unit. Upvc obscure double glazed window to the side elevation, shower cubicle, close coupled wc and wash hand basin. Electric heater, full tiling to the walls and floor.

PARKING

One allocated parking space.

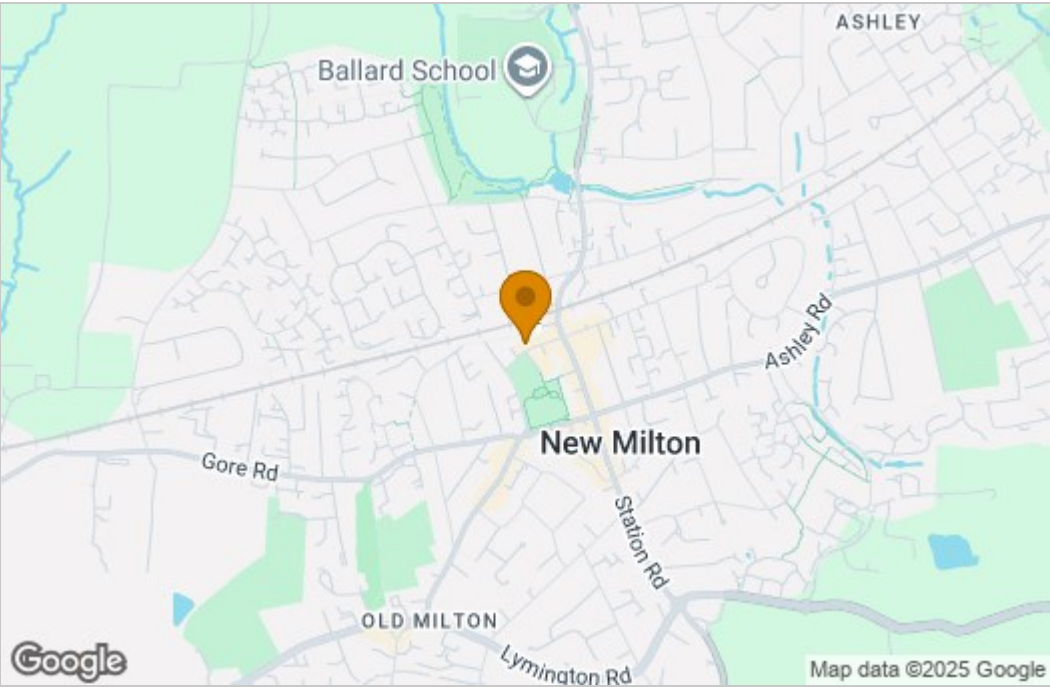
NOTES FOR TENANTS

All tenants will be formally referenced which will include income, credit, employment and previous landlord. The outcome of the references will determine whether the landlords will proceed with the tenancy. Please contact our office for further details 01425 610016 Harrison Estate Agents is a trading name of Regent Residential Lettings Ltd. Full details of all fees are available on our website www.harrisonestateagents.com

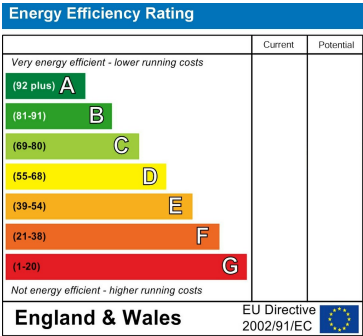
Floor Plan

This plan is included as a service to our customers and is intended as a guide to layout only. Dimensions are approximate. DO NOT SCALE.

Area Map



Energy Efficiency Graph



These particulars, whilst believed to be accurate are set out as a general outline only for guidance and do not constitute any part of an offer or contract. Intending purchasers should not rely on them as statements of representation of fact, but must satisfy themselves by inspection or otherwise as to their accuracy. No person in this firms employment has the authority to make or give any representation or warranty in respect of the property.